

Nov. 21 Entry of the Theotokos

Megalynarion

Carpatho-Russian, Tone 1

Mag - ni - fy, mag - ni - fy O my soul,

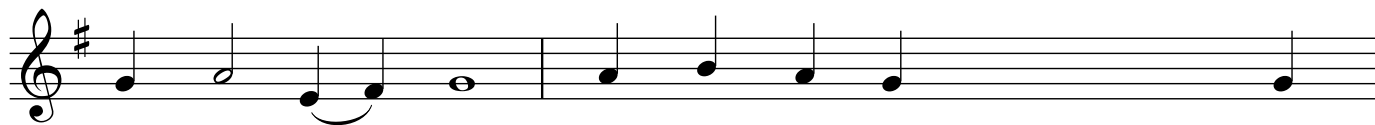
O my soul her who is led into the tem - ple

of the Lord, and blessed by the hands of priests.

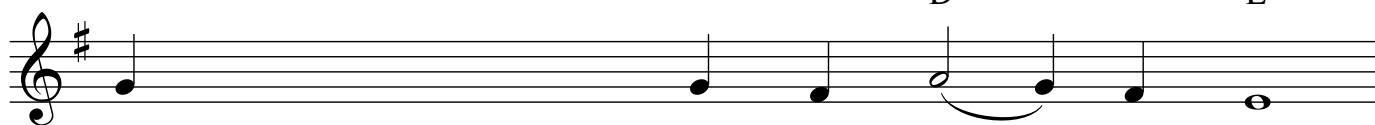
Irmos

E
A strange and most won - der - ful mys - te - ry do I see:

D E
the cave is hea - ven; the vir - gin the throne of



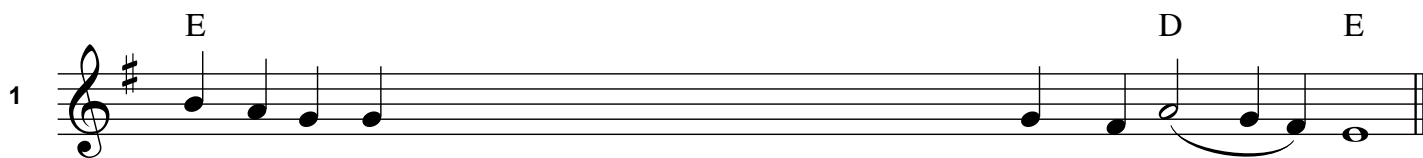
the che - ru - bim; the man - ger a room, in which Christ



the God whom nothing can con - tain is laid.

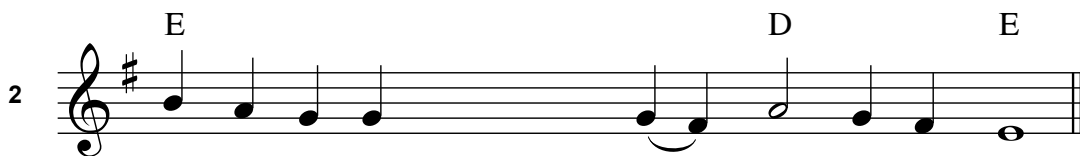


Him do ye praise and mag - ni - fy.



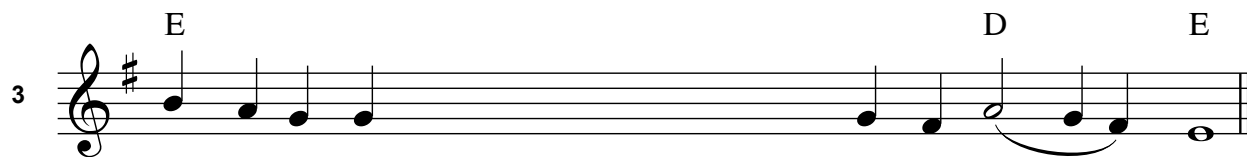
1 Mag-ni- fy, O my soul, God born in the flesh from the vir - gin.

READER: The magi, beholding the strange course... in Bethlehem for our salvation.



2 Mag-ni - fy, O my soul the King born in the cave.

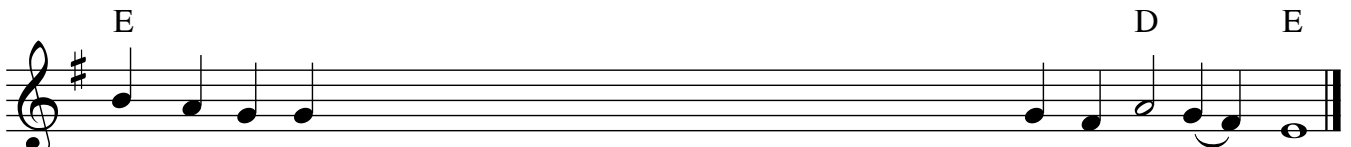
READER: The magi, beholding the strange course... in Bethlehem for our salvation.



3 Mag - ni - fy, O my soul, God worshipped by the Ma - gi.

READER: Where is the newly-born child and king... plotted how to kill Christ.

4

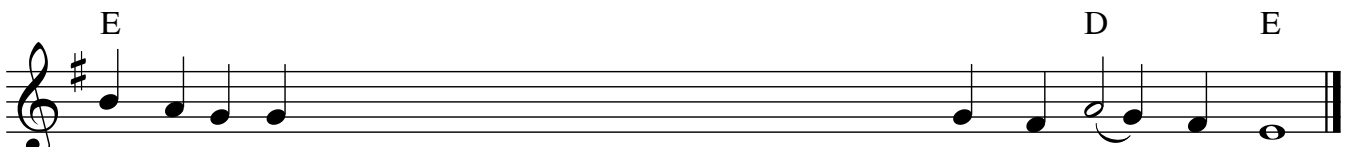


Mag-ni- fy, O my soul, Him who was revealed to the Ma-gi by a star.

Detailed description: A single staff of music in treble clef with a key signature of one sharp (F#). The melody consists of a sequence of quarter notes: G4, A4, B4, C5, followed by a half note G4. Above the staff, the letter 'E' is placed above the first four notes, and 'D' and 'E' are placed above the last two notes. The staff ends with a double bar line.

READER: Where is the newly-born child and king... plotted how to kill Christ.

5

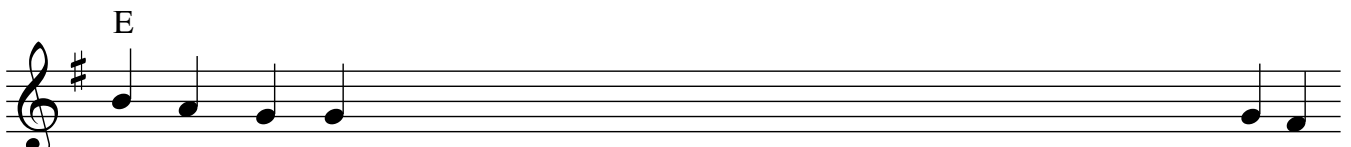


Mag-ni-fy, O my soul, the pure Virgin who has given birth to Christ the King.


Detailed description: A single staff of music in treble clef with a key signature of one sharp (F#). The melody consists of a sequence of quarter notes: G4, A4, B4, C5, followed by a half note G4. Above the staff, the letter 'E' is placed above the first four notes, and 'D' and 'E' are placed above the last two notes. The staff ends with a double bar line.

READER: Herod inquired what time the guiding... the wicked slayer of children.

6



Ma - gi and shep-herds came to worship Christ, born in the ci-ty of



Beth - le - hem.

Detailed description: Two staves of music in treble clef with a key signature of one sharp (F#). The first staff contains a sequence of quarter notes: G4, A4, B4, C5, followed by a half note G4. Above the staff, the letter 'E' is placed above the first four notes. The second staff continues the melody with a half note G4. Above the staff, the letters 'D' and 'E' are placed above the first and second notes respectively. Both staves end with a double bar line.

READER: Herod inquired what time the guiding... the wicked slayer of children.

Then we sing the first Megalynarion and Irmos again.